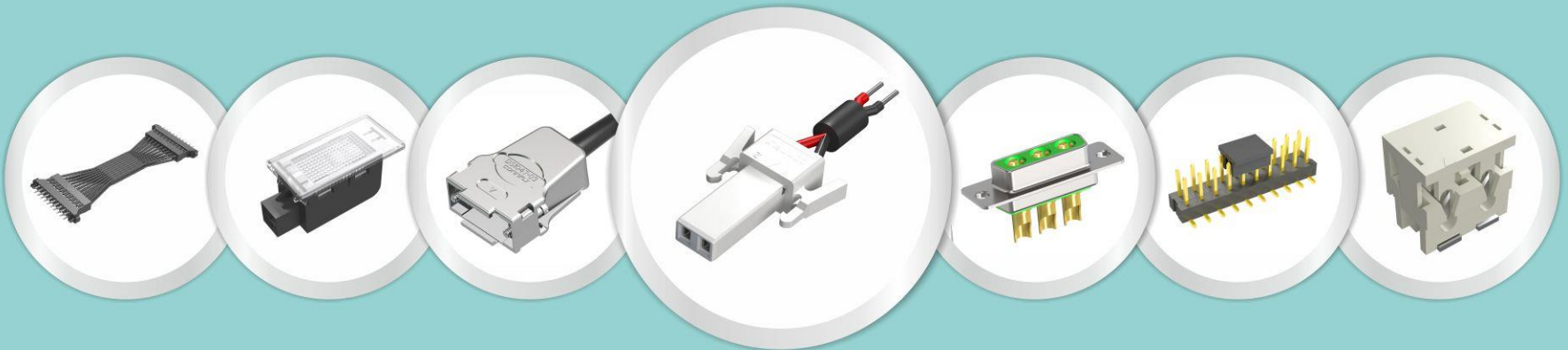




Connectors
Wire Assembly
Solutions
ODM/OEM



www.CONNFLY.com
sale@CONNFLY.com



Company Introduction



Connectors
Wire Assembly
Solutions
ODM/OEM

**A Solutions Supplier
Of Connectors
& Wire Assembly**



CONNFLY ELECTRONIC CO.,LTD , Founded in 1998, is mainly engaged in the R&D, Manufacture and marketing of connectors in many fields. Such as Auto, Personal Transportation Robot, Smart meter, LED lighting, Intelligent robot, Network communication module and Industrial computer. Company's customer base cover the area of European Union, Korea, Turkey, Russia, South America, North America, Middle East and ASEAN. CONNFLY has passed through ISO9001:2008 Quality Management system, ISO14001:2004 Environment Management system certification , OHSAS18001:2007 Occupational Health and Safety Management system certification and TS16949 Automotive Quality Management system certification. Our products are approved by UL, CE and FCC certifications, etc. Through nearly 20 years of development and experience accumulation, Our company has changed from traditional production and manufacturing into R&D and offering Solutions. So far, Our company has provided highly reliable Connectors and Wire Assembly products for several customers and our product development from design input to design output using the PDM system seamlessly. Our company attaches great importance to intellectual property protection, till the year 2016, we've owned 5 patents of inventions, 52 utility models and 13 appearance patent, including an EU patent. Our company is also known as "High-Tech Enterprise", "Scientific and Technological Enterprise" and "Export brand-name Enterprise".

CONNFLY owns 600 staff, covering an area of 20,000 square meters, and has total construction area over 40,000 square meters. All of our products fit for the standard of EU RoHS2.0 and REACH environmental protection and the products we manufactured are sent to SGS test institute at regular intervals every year. Our company has independent lab , which can complete the performance test of electronics ,machinery and environment .Testing instruments include humidity tester, automatic pull & push tester, micro hardness tester, CCD image measuring apparatus, elongation force tester, temperature rise tester, salt spray tester, dielectric withstanding voltage tester , contact resistance tester, insulation resistance tester, pressure measuring apparatus , rockwell hardness tester , IR reflow machine and vibration tester, RoHS tester, X-RAY tester, etc.

From order receiving to shipment, our company uses ERP operation system overall process. Through the CRM software, salesman can achieve resource integration with our clients. In order to achieve precise shipping and enhance efficient warehousing operation, We' ve imported bar code management system in 2016 and plan to achieve AGV unmanned automatic handling and storage in the next two years!

In order to ensure the customer' s needs of fast delivery, Our company has formed a powerful production system which includes 200 sets of all types of self-designed automatic machine, 30 clean production lines, 40 sets of frequency of injection molding machine, 20 sets of precision high-speed punch (SPM up to 1000 times) and one set of precision die-casting machine. Besides, Our company also has an independent mould processing department owning 3 slowly wire cutting imported from Japan, 2 PLC control automatic grinding machine, 20 grinding machine, 5 EDM machine, 1 precision engraving machine, 1 laser welding machine, 3 milling machine, 7 fast wire cutting which provide strong support for new product development.

www.CONNFLY.com

sale@CONNFLY.com

Product Introduction

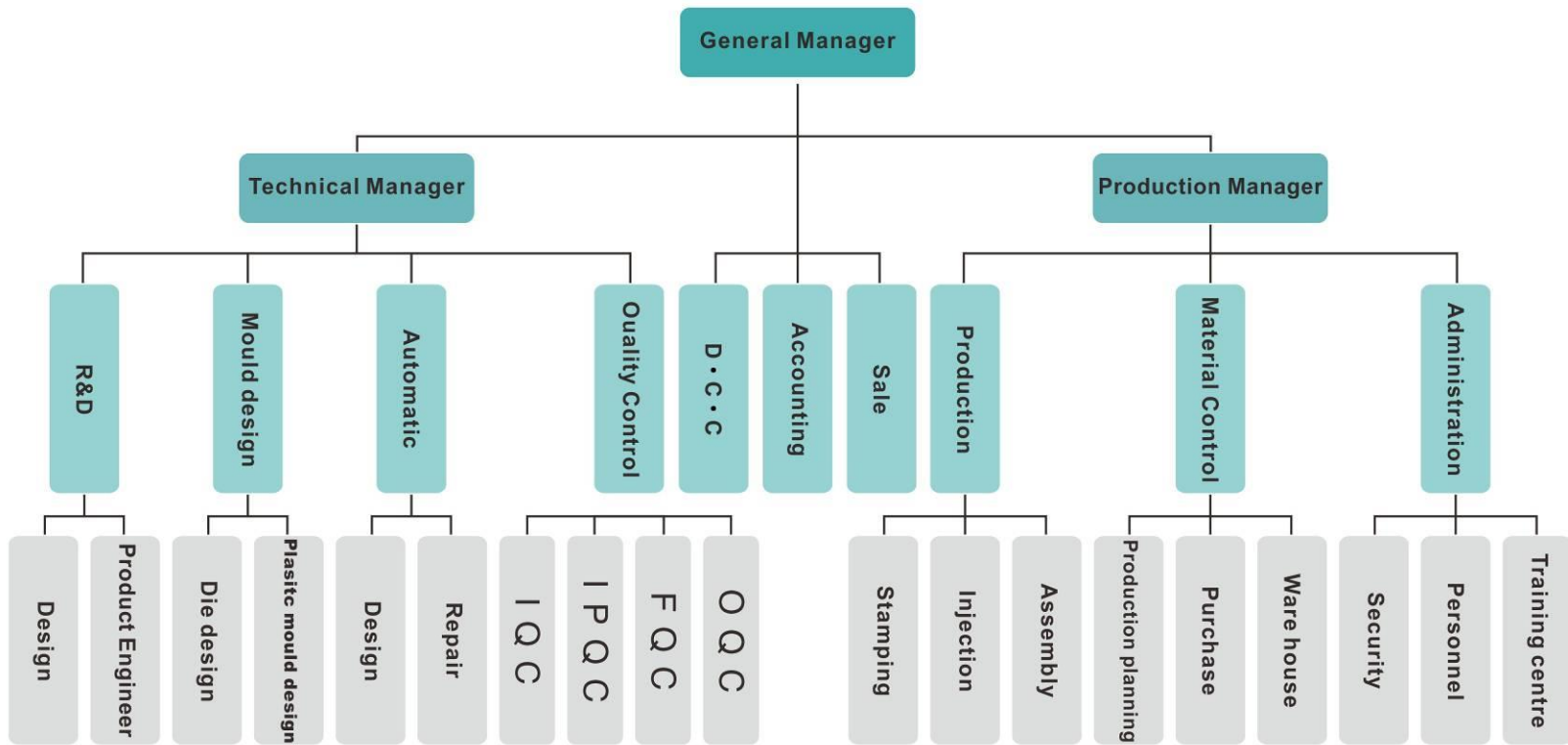


What **CONNFLY** produces includes LED connectors, PIN headers, Female headers, D-SUB, Shrouded headers, Box headers, IDC socket series, IC Socket Pin Series, Machine Pin Series, IC Series, Flat cable, Multi color series, Wafer series, Micro Match, D-SUB Hoods series, USB, MINI-USB, FPC, PLCC, DIN 41612 series, Bread Board, Jumper Wire series, SIM card, SD card etc. Every product strictly conforms to RoHS. To ensure RoHS compliance, we have purchased an environmental protection tester, testing every batch of products and material. Besides, we will send our products to SGS Shanghai Branch for testing regular every year.

In addition to independent R&D and promoting products, we also carry on OEM business, customizing products and providing solutions for customers any time.

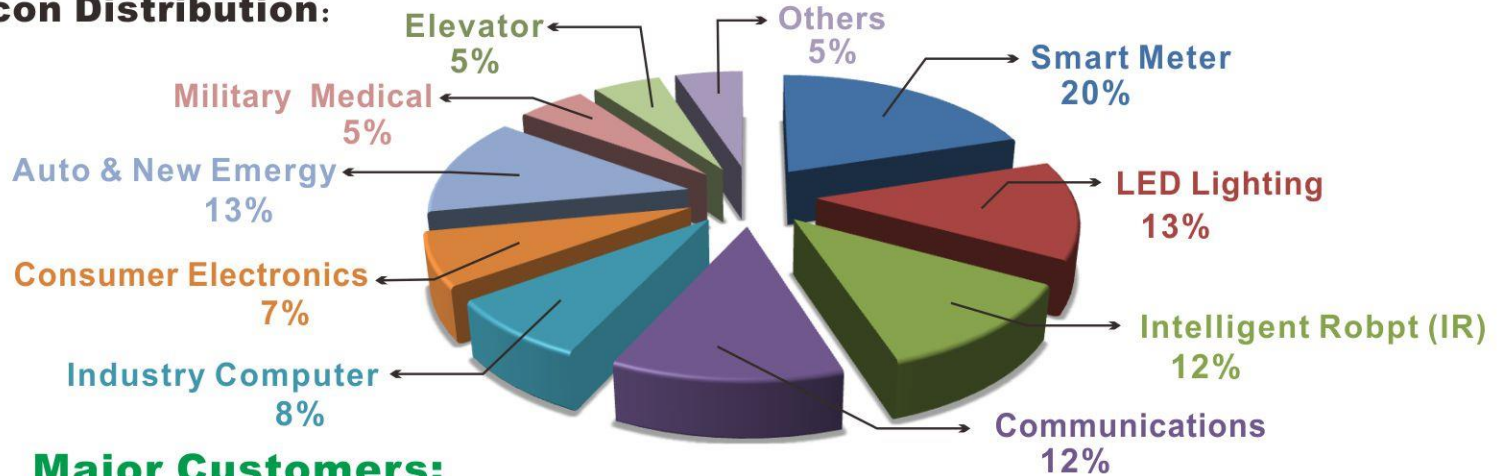
Organization Frame

Company Organization



Sales Scale

Icon Distribution:



Major Customers:

Domestic:



Overseas:



Smart Meter 20%

LED Lighting 13%

Auto & New Energy 13%

Intelligent Robot (IR) 12%

Communications 12%

Industry Computer 8%

Consumer Electronics 7%

Elevator 5%

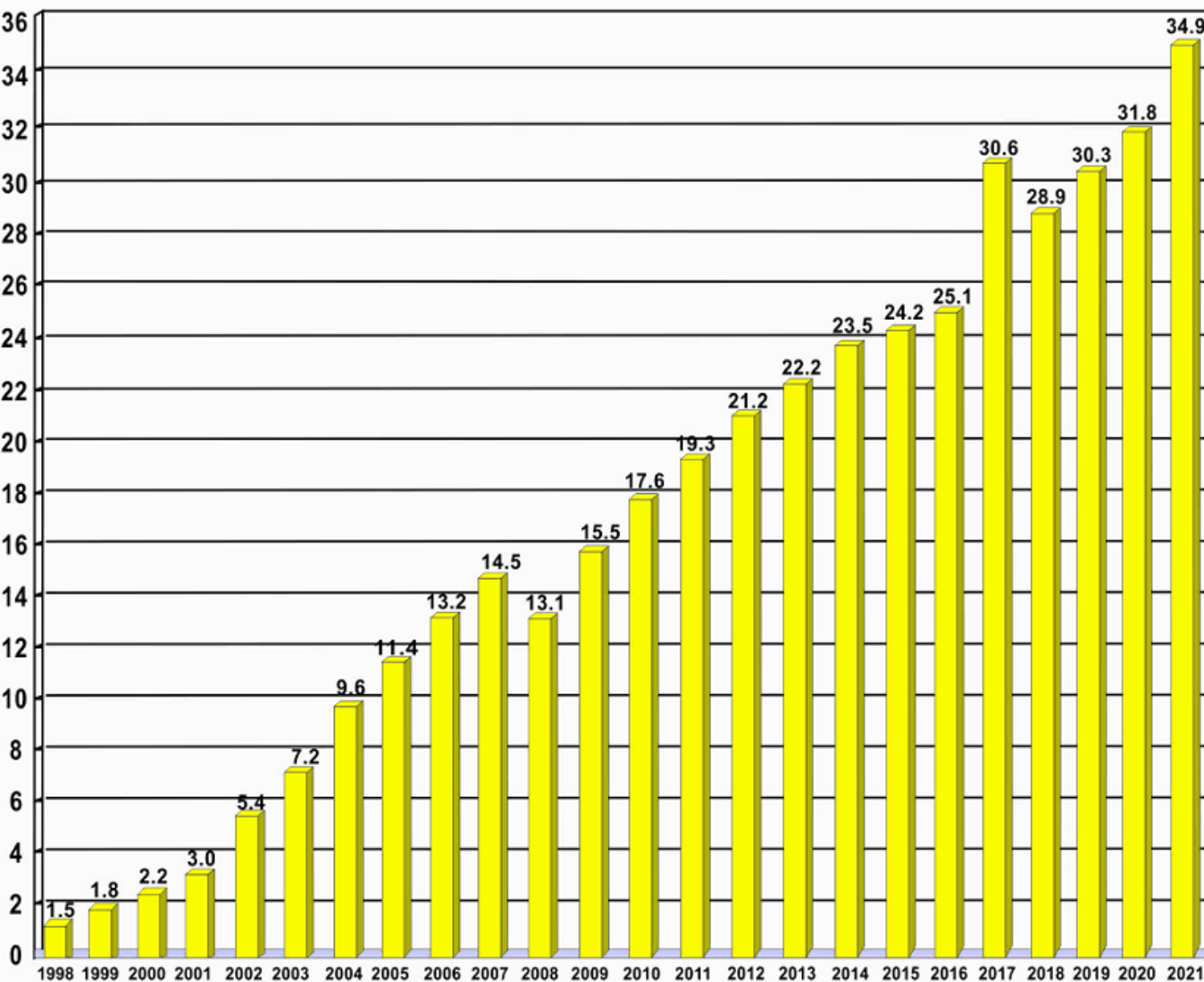
Military Medical 5%

Others 5%

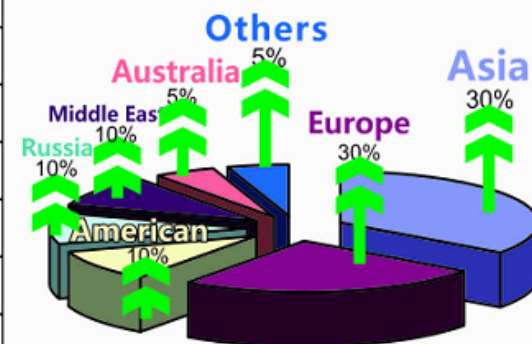
Turnover Resume

Turnover

(Units: Millions USD)



Distribution:



Sales Area



www.CONNFLY.com sale@CONNFLY.com

www.CONNFLY.com sale@CONNFLY.com

R & D Team



CONNFLY pays much attention to R&D and has already set up a strong product design team with 15 engineers. They use computer aided design 3D and 2D software to do shape design, assemble simulation and stress analysis with detailed design inspection from design input, the first draft of concept to design output. Moreover, under continuous innovation, our company has obtained 5 invention patents, 40 utility model patents and 13 patents for design.

Quality Assurance



Salt Spray Tester



Dielectric Withstanding
Voltage Tester



Humidity Tester



Contact Resistance Tester



Projector



Oven



Temperature Rise Tester



IR Reflow Machine



Insulation Resistance Tester



CCD Projector



Pull & Push Tester



Glow Wire Tester



Steam aging
test chamber



Vertical horizontal
testing machine



HV Hardness Tester



X-RAY Tester



RoHS Tester



Vibration Tester



Tensile Strength Tester



Balance

CONNFLY demands strict standards of the quality of products and materials. QRA department consists of CQC, IQC, IPQC, FQC, OQC, SQ and QA. The company has built strict Quality traceability system and all kinds of data analysis reports and standardized the checkout procedure and testing data successfully with the help of ERP system. It also has independent labs, which can fulfill electric, mechanical and environmental performance tests, and machines including Humidity Tester, Pull & Push Tester, CCD Projector, Tensile Strength Tester, Oven Tester, Salt Spray Tester, Insulation Resistance Tester, Contact Resistance Tester, Dielectric Withstanding Voltage Tester, Rockwell hardness tester, IR Reflow Machine, RoHS Tester, X-RAY Tester, Vibration Tester etc.

Mold Development



Wire Cutting



Grinding Machine



CNC



EDM



Stamping Mold



Plastic Mold

Mold department consists of plastic mould development and hard ware development. Now the mold department has more than 10 members who use computer-assisted 3D and 2D software to finish the design process. For complex plastic parts, they must do theory mold flow analysis before mold design. All the molds are self-designed, processing and assembly. **CONNFLY** has built perfect mold processing center owning 2 slowly wire cutting imported from Japan, 20 grinding machine imported from Taiwan, 6 EDM, one CNC, one laser welding machine, 5 milling machine and 10 fast wire cutting.

Automatic Development



To ensure excellent quality and reliable products performance, **CONNFLY** has set up Automotive Sector which consists of two parts, mechanism design and electrical design and is making full use of advanced PLC and CCD image measurement technology to do automated design. In order to offer customers products with stable performance, every automated machine is equipped with infrared optional fiber sensing and electrical performance testing facility for automatic detection automatic discharge. Besides, to enhance productivity, it has been realized that some products are packaged under unmanned operation.

Production Unit - Assembly Depart.



CONNFLY connectors are entering into quality microcosmic times, because the main raw materials terminals have to be plated, it needs high requirement on the production environment. In order to guarantee the connectors microcosmic quality, **CONNFLY** all the workshops are coming to dust proof times, there are automatic and assembly line, all the workshops have the central airconditions, production temperature controled between:23-26 degree.

Production Unit – Press Depart.



CONNFLY has big stamping workshop, all the production device are made in Japan & Taiwan, currently we have 20 sets precise high speed stamping machine, and all device are light control horizontal feeder, daily capacity can be 9600K, to ensure the fast delivery.

Production Unit – Injection Depart.



In order to guarantee the quality of insulator, our plastic mould design all used less cavity more sets, because of the various products, now we have used strong injection systems, including 40 sets precise transformer injection machine, 40 sets automatic robots, 40 sets automatic picking up machines, 40sets adjusted constant dryers and 20 sets oil heating machine, the daily capacity can be 2000K!



Production Unit – Wire & Flat Cable Depart.



In order to expand **CONNFLY** products' applied area and end customer's use, **CONNFLY** has developed the automatic wire production line, up to now, we have more than 10 years research and production experience, The products including UL2651 flat cable, multi-color flat cable, UL2468 flat cable and UL1007, UL1015 electronic wires, all the products are passed UL approval.

Production Unit - Pin Depart.

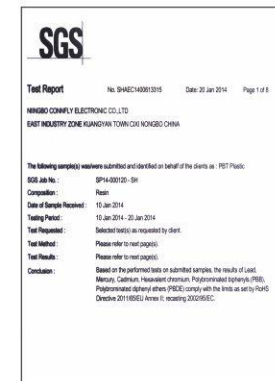
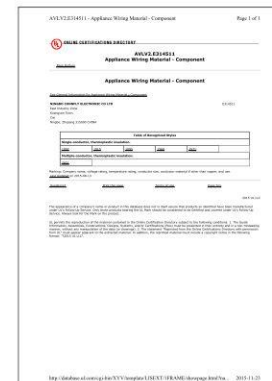


Considering the most important parts of the pin header-square pins, **CONNFLY** make it totally by itself, raw materials using high quality flower type and meeting Euro Reach standard round copper line, before cutting pins, by using precise frequency transformer mould and automatic cooling wire drawing bench, the precision can meet $\pm 0.002\text{mm}$, Then use precise pin cutting machine do mass production, total pin length tolerance can be controlled $\pm 0.05\text{m}$. In order to meet fast delivery, we have put many money into the device, up to now, we have high speed precise pin cutting machine 40 sets, daily capacity is 20,000,000pcs.

Storage System



CONNFLY warehouse systems including mould warehouse, hardwares warehouse, insulator warehouse, packing warehouse and finished products warehouse, among metal parts and finished products warehouse are constant temperature and humidity. Total storage area is 10,000 m², by using individual storage rack mold, and for each rack has internet format, products part number including quantity, customer code, order number and shipping date and all informations, storage area also meet the ERP systems, to guarantee the fast delivery. And all the warehouse has the standard FIFO and regular checking system documents, and finally can avoid any stock dull products.



CONNFLY168, 欢迎访问! [【退出】](#) [进入新版](#) [个人中心](#) [网站导航](#) [帮助中心](#)

专利检索及分析
Patent Search and Analysis

中文 | English | Français | Deutsch | русский | Español | Português

常规检索 高级检索 导航检索 药物检索 热门工具 命令行检索

所在位置: 首页 >> 高级检索

检索历史

检索式运算

95 高级检索
申请(专利权)人=(宁波...
174篇 2022-02-09
[引用](#) [检索](#)

94 高级检索
申请(专利权)人=(宁波...
174篇 2022-02-09
[引用](#) [检索](#)

93 高级检索
发明人=(丁青松)
215篇 2021-12-24
[引用](#) [检索](#)

92 高级检索
申请(专利权)人...
8篇
[引用](#) [检索](#)

范围筛选

中国:
中国发明申请 香港
中国实用新型 澳门
中国外观设计 台湾

主要国家和地区:
EPO WIPO 美国
日本 韩国 英国

高级检索

申请号 申请日 =

公开(公告)号 公开(公告)日 =

发明名称 IPC分类号

申请(专利权)人 发明人

申请(专利权)人 宁波晨翔电子有限公司

Until to January 1, 2022, CONNFLY has a total of **174** patents!

检索式 列表式 多页式 申请日降序 过滤

1 / 15 页 174 条数据

☐ 一种电池盒插头 [【版权公告】](#) 同族:0 引证:0 被引:0
申请号: CN202121273681.0
申请日: 2021.06.08
公开(公告)号: CN215299440U
公开(公告)日: 2021.12.24
IPC分类号: H01M50/296; H01M50/244; H01M50/251; H01M50/24; H01R13/02; H01R13/40; H01R4/02;
申请(专利权)人: 宁波晨翔电子有限公司;
发明人: 丁青松;
代理人: 唐忠庆;
代理机构: 北京恒泰康知识产权代理有限公司(普通合伙) 11210;
[详情](#) [收藏](#) [+分析库](#) [申请人](#) [法律状态](#) [跟踪](#)

☐ 一种带按键的电池盒 [【版权公告】](#) 同族:0 引证:0 被引:0
申请号: CN202121257207.9
申请日: 2021.06.07
公开(公告)号: CN215299413U
公开(公告)日: 2021.12.24
IPC分类号: H01M50/244; H01M50/251;
申请(专利权)人: 宁波晨翔电子有限公司;
发明人: 丁青松;
代理人: 唐忠庆;
代理机构: 北京恒泰康知识产权代理有限公司(普通合伙) 11210;
[详情](#) [收藏](#) [+分析库](#) [申请人](#) [法律状态](#) [跟踪](#)

☐ 一种三只脚的插座 [【版权公告】](#) 同族:0 引证:0 被引:0
申请号: CN202121136063.1

Service



In order to serve the customers best, **CONNFLY** has set up a group of after service from R&D, QC and sales, every time they will listen and communicate with the customers, follow their good suggestions and make improvement. We have set up advanced service systems, and do regularly customer relationship's maintenance by using OA and CRM softwares, mostly by using face to face communication, and solve the customers' complain in time.

Responsibility and Honor



After 16 years development , By means of **CONNFLY** workers whole efforts, now we have been domestic and overseas famous connector manufactor, meanwhile we also bear more society responsibility. At the same time of fast development. We also drive the local employment station. Until end of year 2014, **CONNFLY** has gained the “High Technoloy Enterprise.” “NINGBO Scientific Enterprise” “ NINGBO Export Famous Brand” as such 10 items honours.

Enterprise Culture

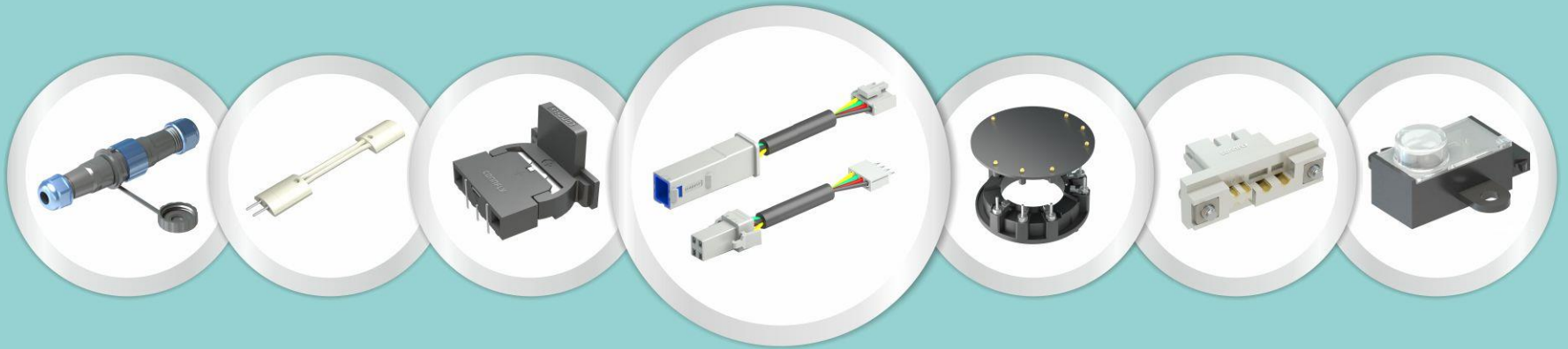


CONNPLY enterprise culture is People oriented, High Efficiency and Innovation, Continuous Develop, Create Value. In order to improve the whole technology and innovation level, our company do the internal training. In order to make the worker's sparetime more abundant, we have the party and traveling annually. In order to increase the workers' feeling at home, Everyone can receive the birthday cake and various articles for daily use, for the workers who have the family difficulty, The labor union origination will give maximum substance and numimous support.

Global Eyes



CONNPLY has taken importance on the global market, stable domestic high level route, now we do business with more than 100 countries and areas, every year we attend the domestic and overseas famous electronic fair, in order to promote CONNPLY brand value and CONNPLY new products, all the CONNPLY people will do the efforts together to make a world first-rate connector enterprise.



THANK YOU
Welcome to **CONNFLY**

www.CONNFLY.com
sale@CONNFLY.com