



Company Profile



PalmTech Group



<https://www.palmtech.com.tw/>

Overview



Company Introduction

Organization Structure

PalmTech Group

Factory information

Markets & Customers

Products & Application

Advantages & Vision & Mission

Company Introduction

Established in 2000, we have ensured that the manufacturing plants in Taiwan and mainland China are equipped with state-of-the-art machinery.

With strong technical support and well-experienced R&D group, we have succeeded in developing wide-ranged products such as COB, COG, TAB, COF LCM, TFT LCD Module, Backlight, Touch Panel and OLED Module.

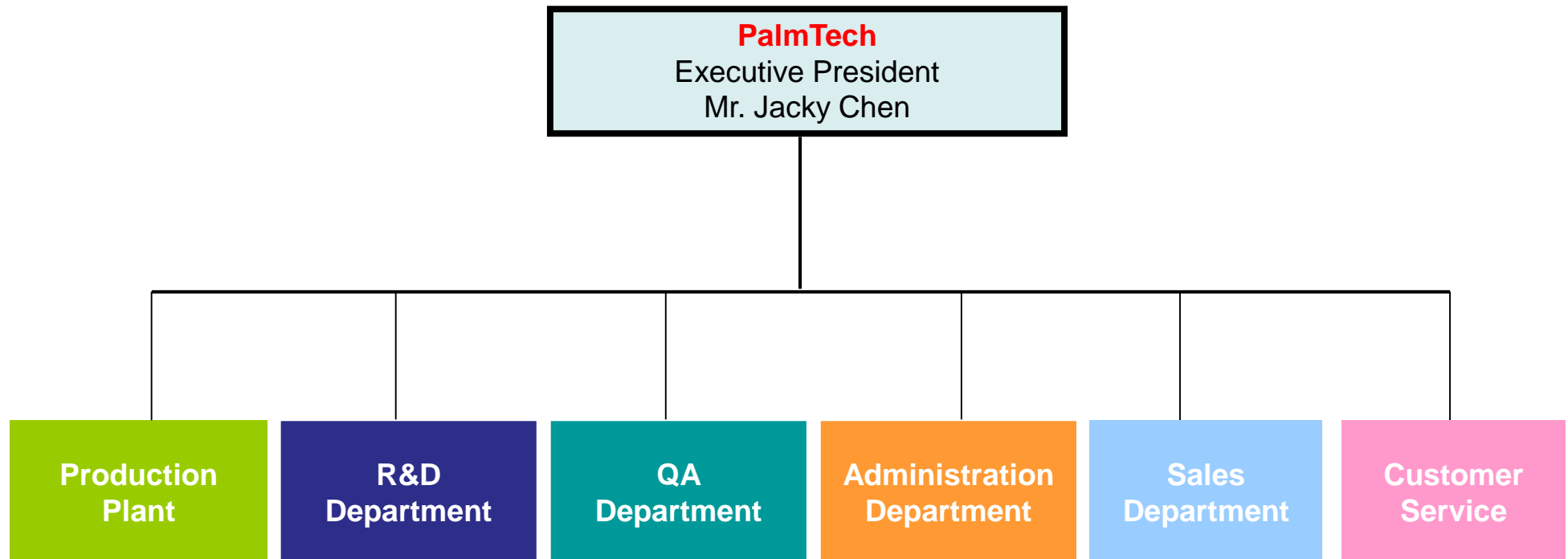
As an ISO certified company we have pledged to provide our customers with quality liquid Crystal Display products in a timely and professional manner.



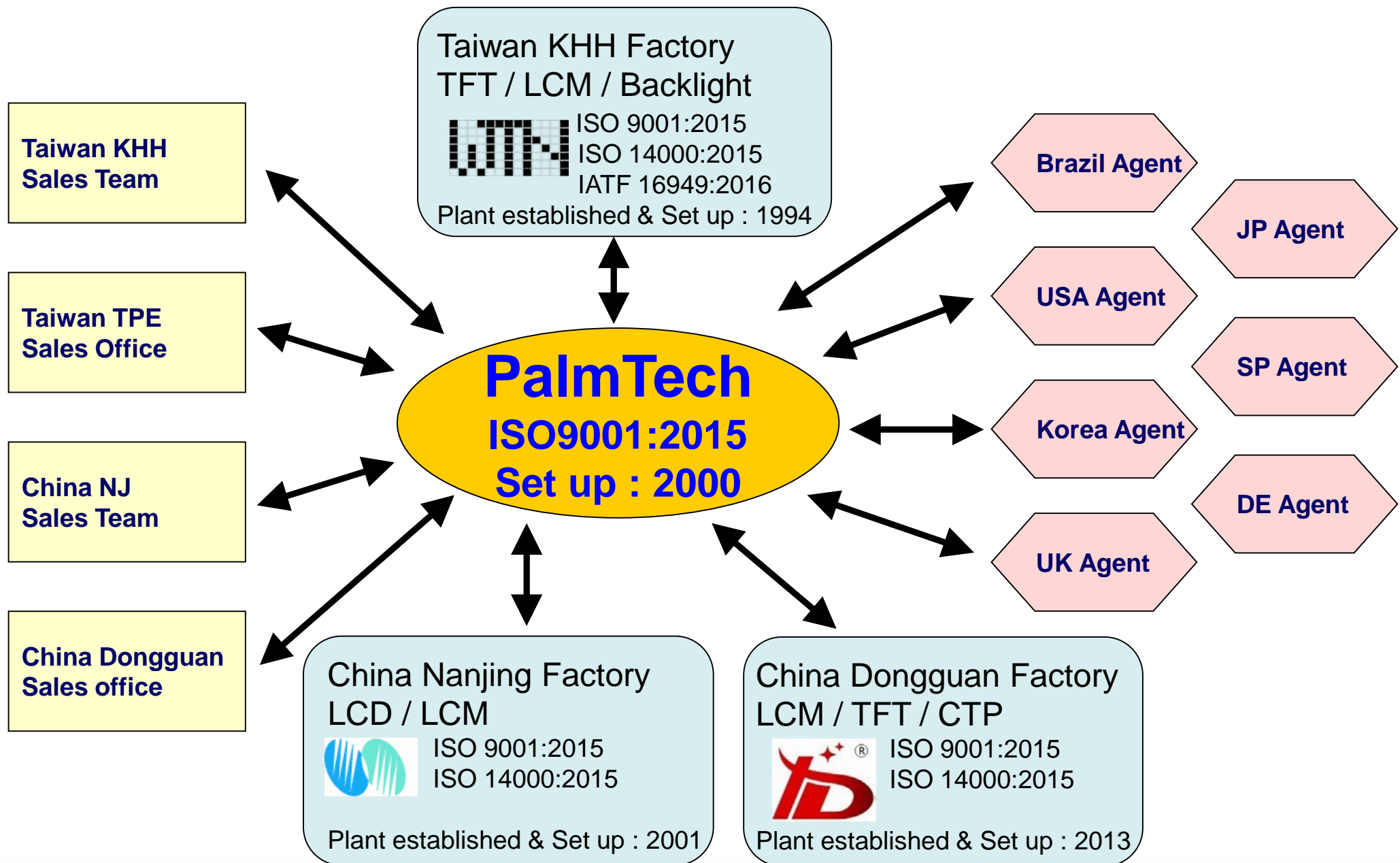
TOTAL SOLUTION IN DISPLAY



Organization Structure



PalmTech Group

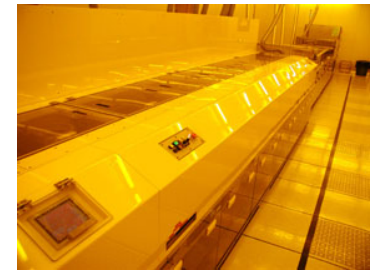


Factory information

- ❖ *Engineer : 50 peoples 22 in Taiwan / 28 in China Factory*
- ❖ *Employee : 680 peoples 180 in Taiwan / 500 in China*
- ❖ *NJ Factory Size : 61750 m²*
- ❖ *Dongguan Factory Size : 2000 m²*
- ❖ *KHH Factory Size : Land : 2500 m² Building : 4950 m²*

Panel Line :

TN --- 14" x 16" * 1 Line
STN --- 14" x 16" * 1 Line

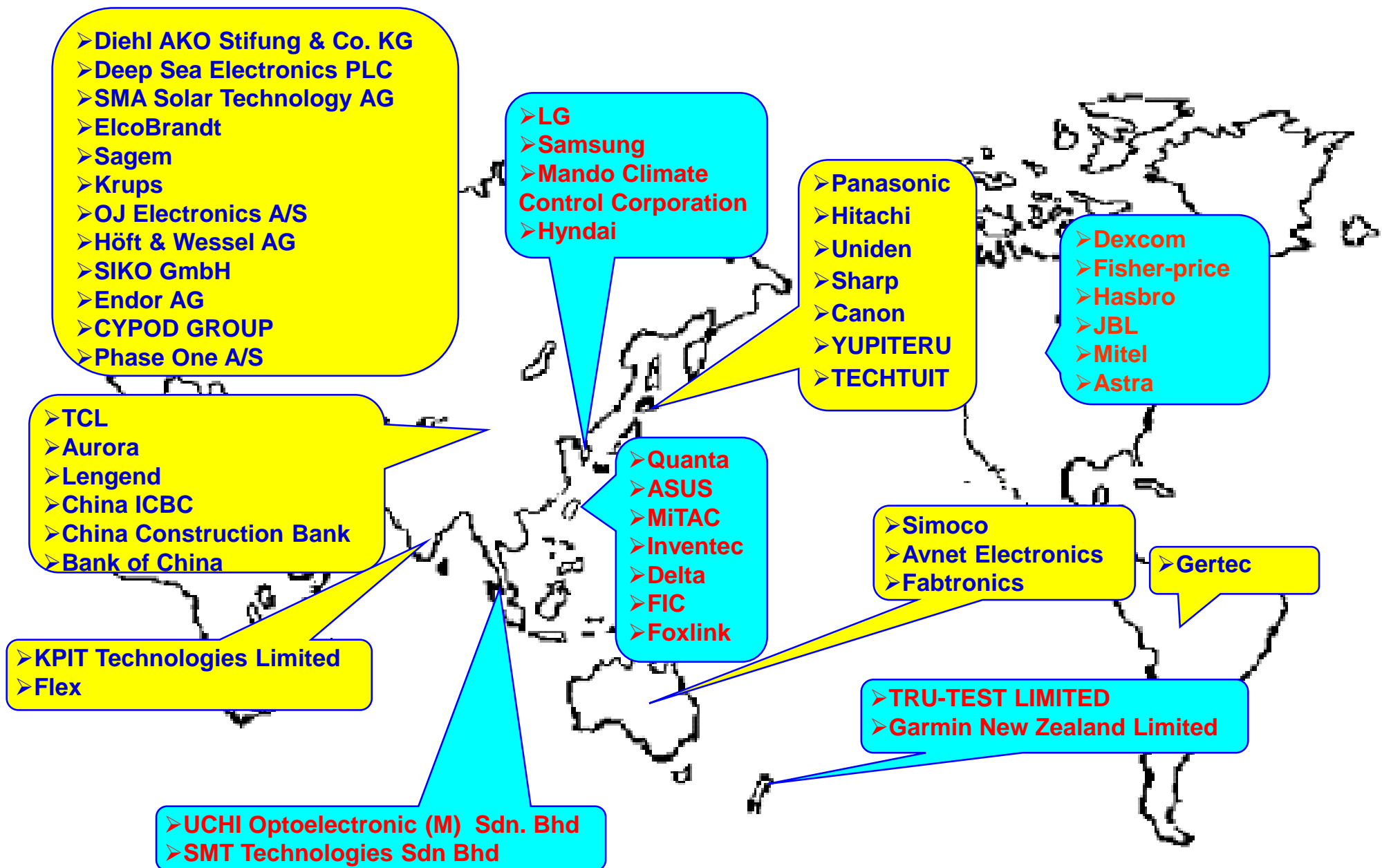


Module Line :

COB (Chip on Board)
SMD (Surface Mounting Devise)
TFT Automatic Machine Process for cutting, cleaning & polarizer tapping
COG (Chip on Glass)
TAB (Tape Automates Bonding)
Backlight Module Assembly Process



Markets & Customers



Products

LCD Panel

- TN:1/16-1/32 Duty
- STN:1/16-1/240 Duty
- FSTN:1/16-1/240 Duty

Monochrome LCD Module

- Character Product (8x1 ~ 40x4)
- Dot-Matrix Graphic Product (64x32 ~ 480x240)



TFT Display

- Portrait orientation Display (0.96"~10.1")
- Landscape (2.4"~10.4")



Touch Panel

- Resistive Touch Panel
- Capacitive Touch Panel

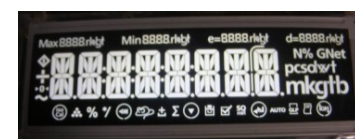
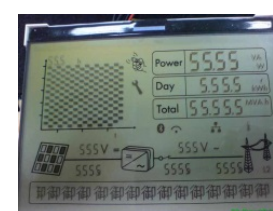
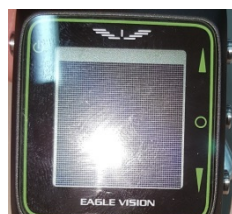
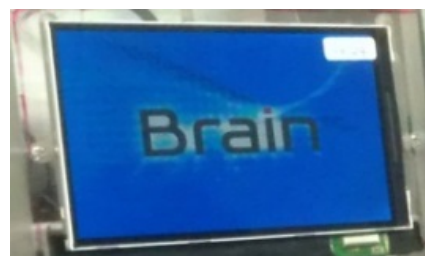
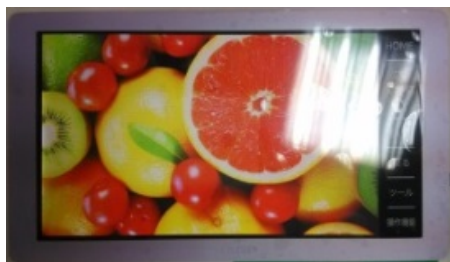


OLED Display

- Graphic Product (0.42"~3.42")
- Character Product (3.08")



Products Application



Advantages

- Full spectrum of standard product models
- Customization service with flexibility and fast turn-around capability
- To provide complete design and development consultation
- High flexible production capacity & high trust delivery on time performance
- Insisting on quality policy, providing high quality and systematic service
- Strong and stable close relationship with customers

Vision & Mission

We are committed to developing new and innovative technologies specifically designed to rejuvenate second to none LCD, LCM, TFT, OLED and Touch.

We are also devoted to making customer' designs easier by providing an all-inclusive personal technology support that combines the functions of several part assembling into one powerful solution.

- Our state of art equipment enables us to get the yield rate of 100 PPM. To provide different customers with different products and designs to customer's specifications.
- To enhance and raise our market competition in price, quality and diverse products, we are also involved in TFT and Backlight design and production in order to serve customers well.

It's our goal to innovate new technologies that make this quicker and more convenient than ever before and to be a best supplier in LCD, LCM, TFT, OLED, Backlight and Touch Panel design!



To be a leading global display manufacturer representing the best visual bridge for man/machine interface

To create a value-added design & manufacturing solution for small-medium sized display through teamwork spirit and a win-win philosophy



Thank you !

謝謝您 !